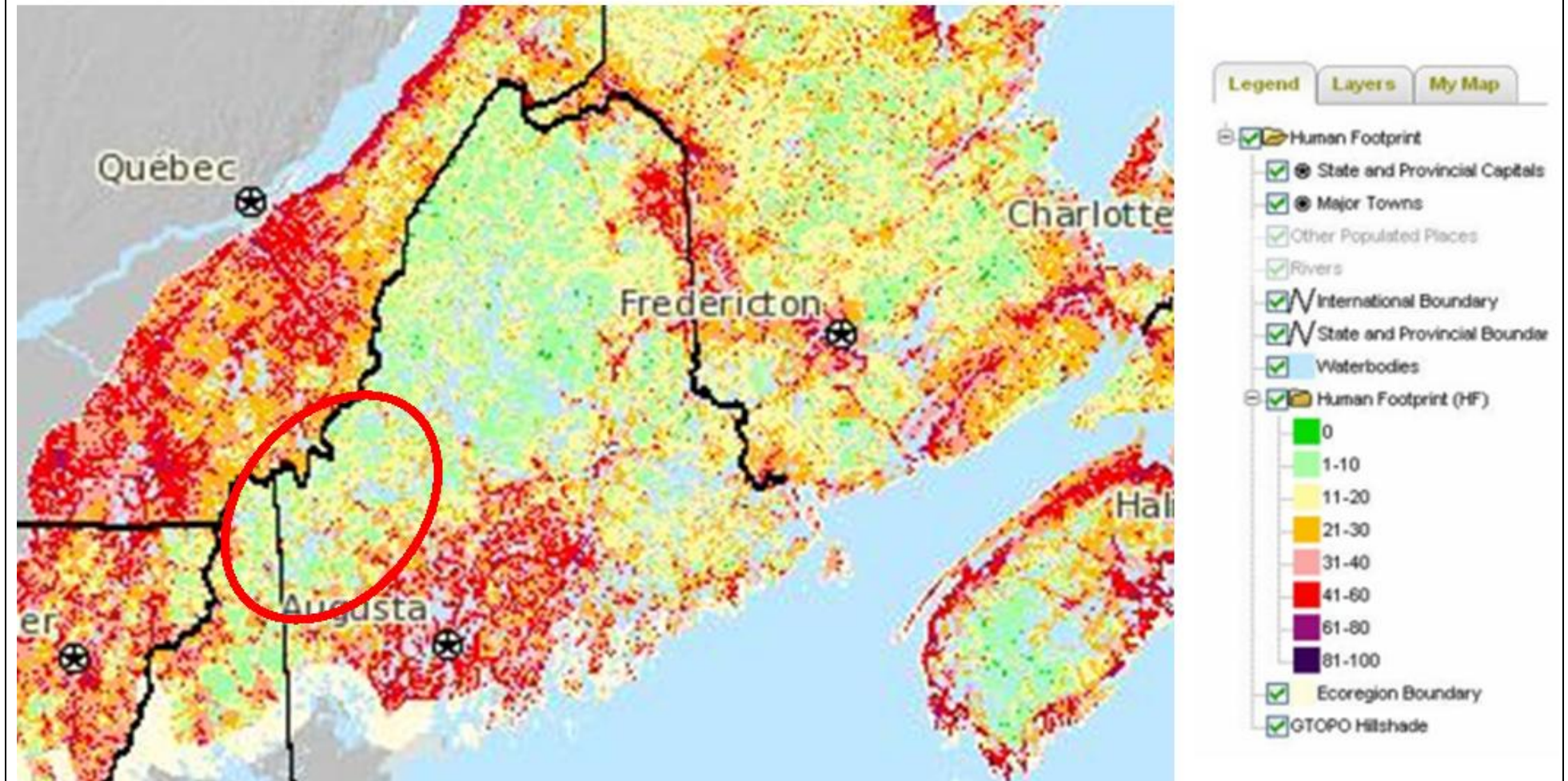


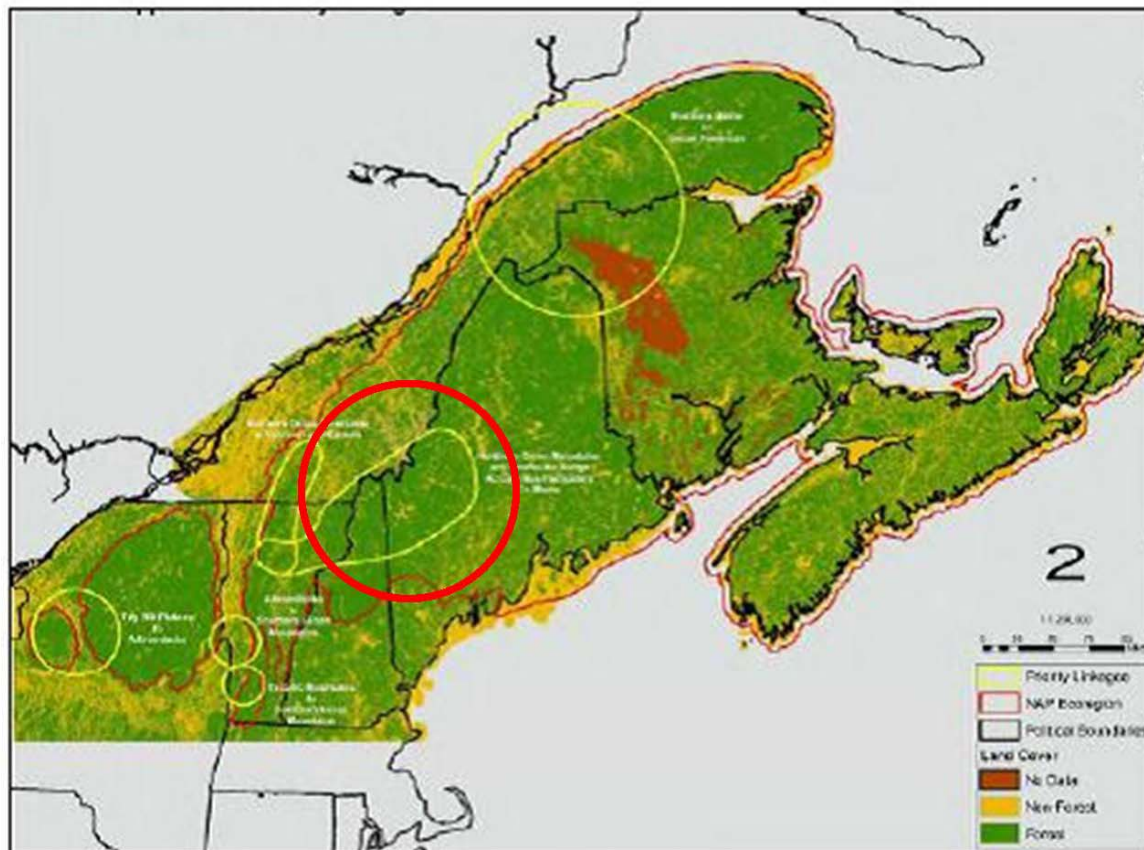
**Maine's Western Mountains and Lakes play an important role in providing a needed plant and wildlife habitat corridor between conservation lands in New Hampshire and the vast woodlands of Northern Maine**

Human Footprint – From the 2Countries 1 Forest Website



The variety of terrain and land uses, dramatic changes in elevation, high diversity of ecological communities, high proportion of rare plants and animals, lack of fragmentation, the role this region plays in landscape connectivity, and the risk to water quality and habitat due to the impacts of increasing development, identify this area as the focus of an ambitious conservation effort.

Map 1 The six high priority wildlife linkages in the Northern Appalachian Ecoregion



**The significant natural features of the region include 11 of the 14 highest mountains in Maine and the largest chain of lakes in the state. The water resources of the region include over 75,000 acres of large lakes, hundreds of miles of rivers and thousands of acres of significant wetlands and riparian habitat.**

**Steep elevation changes in the mountain areas provide an unusual closeness of varying habitats that would otherwise be separated by hundreds of miles. This quality is essential for the survival of slow moving species that cannot move long distances north in order to follow their habitat in the wake of climate change, but can gradually move up a relatively short distance to higher elevation.**

**Please contact Carole Haas, executive director of the Maine Appalachian Trail Land Trust, [chaas@matlt.org](mailto:chaas@matlt.org), for more information on current conservation opportunities.**

